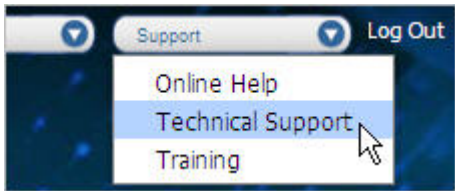
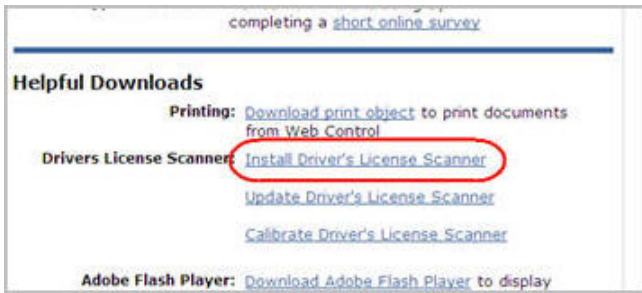
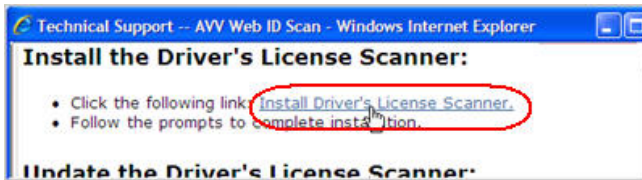



Web Control Driver's License Scanner Installation

The following directions describe how to install the ScanShell 800 or SnapShell driver's license scanners on computers with the Windows XP or Vista operating systems.

Important Notes:

- To install the Driver's License Scanner and software, you must have **Administrative** rights to the computer where you want to do the installation.
- Do **not** connect the scanner to your computer until the installation process asks you to do so.
- You must have **Adobe Reader** installed on your computer before beginning the installation. If needed, you can install it, from the **Tech Support** page in Web Control.

<ol style="list-style-type: none"> 1. Log in to Web Control. 2. From the Support list at the top of the screen, select Technical Support. 	
<ol style="list-style-type: none"> 3. From the Helpful Downloads section, click Install Driver's License Scanner. 	
<ol style="list-style-type: none"> 4. From the Install Driver's License Scanner section, click Install Driver's License Scanner. 	
<ol style="list-style-type: none"> 5. Click Run. 	

Web Control Driver's License Scanner Installation

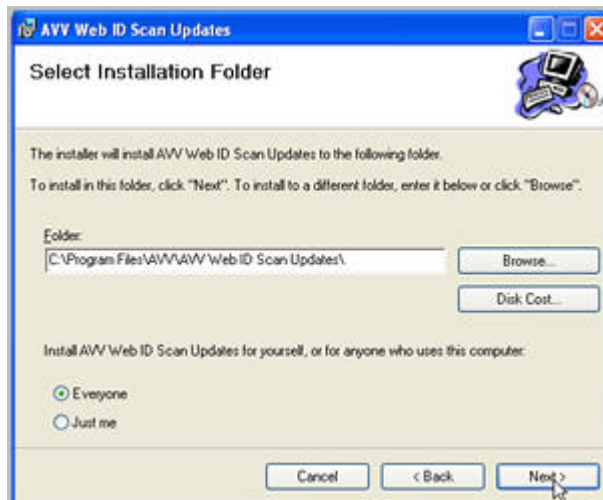
6. Click **Run** again when you receive a Security Warning about the publisher not being verified.



7. Click **Next** to start the installer.

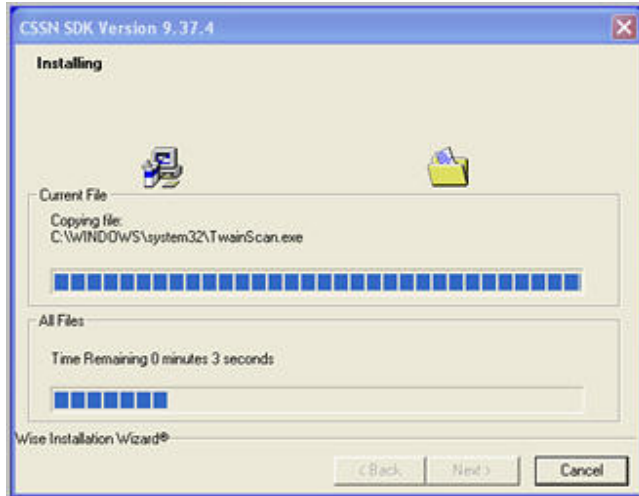


8. Click **Next** when prompted to **Select Installation Folder**.
- You do not need to change the default folder that is listed.
- Note:** If you are installing the scanner on a shared computer and the others who use the computer need to use the scanner, please make sure the **Everyone** option is selected before clicking **Next**.

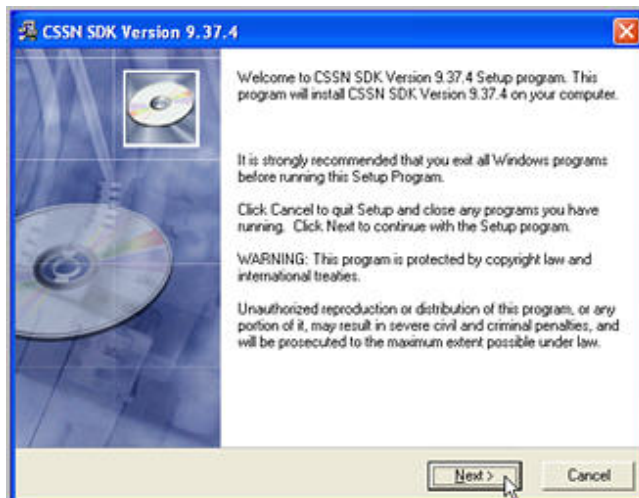


Web Control Driver's License Scanner Installation

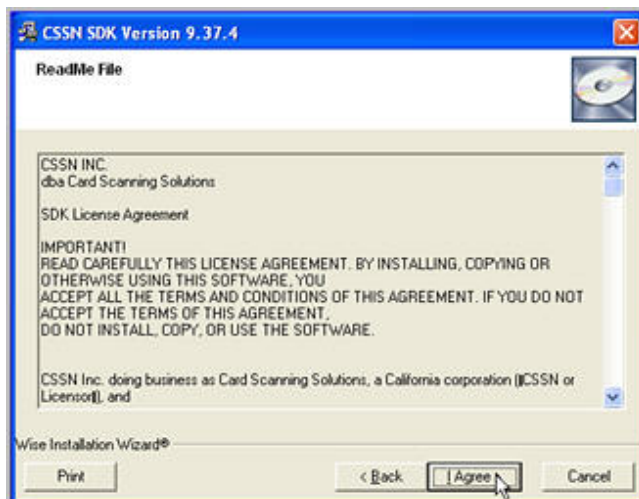
9. On the **Confirm Installation** screen, click **Next** to start the installation.
- The screen displays the progress of the installation.



10. Click **Next** to continue the installation.
- It is recommended that you close any open programs before continuing.



11. For the **SDK License Agreement**, click **I Agree**.
12. On the **Destination Location** screen, click **Next**.

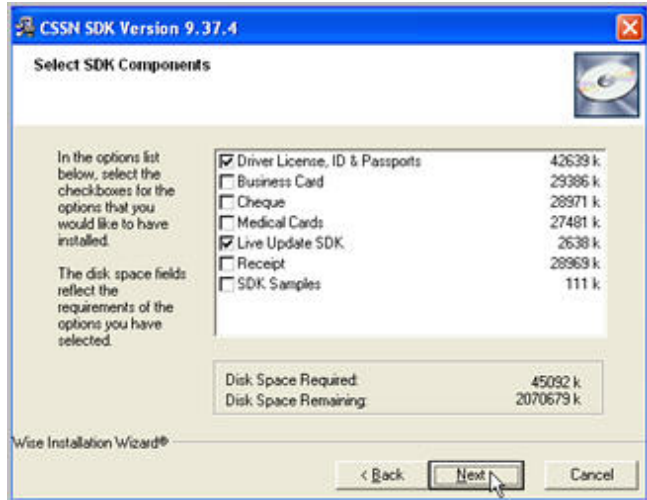


Web Control Driver's License Scanner Installation

13. On the **Select SDK Components** screen, verify that the following options are the **only** ones selected:

- **Driver License, ID & Passports**
- **Live Update SDK**

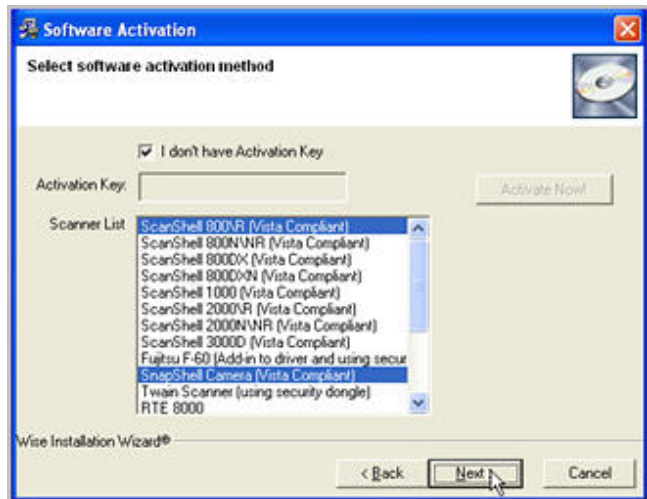
14. Click **Next**.



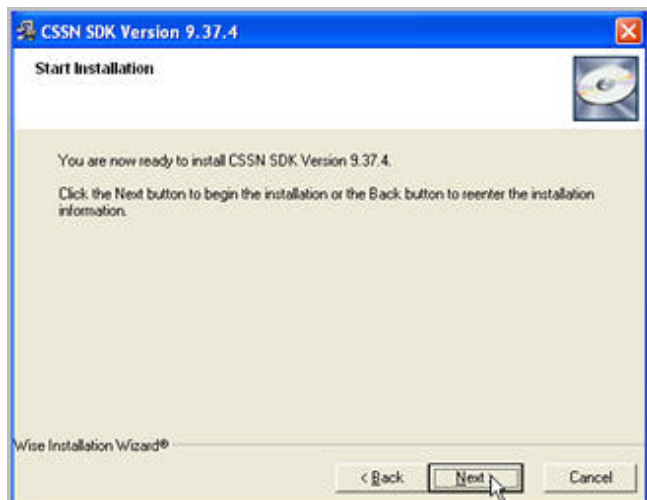
15. On the **Software Activation** screen, verify the following are selected:

- **I don't have Activation Key** check box
- **ScanShell 800\R (Vista Compliant)**
- AND -
- **SnapShell Camera (Vista Compliant)**

16. Click **Next**.




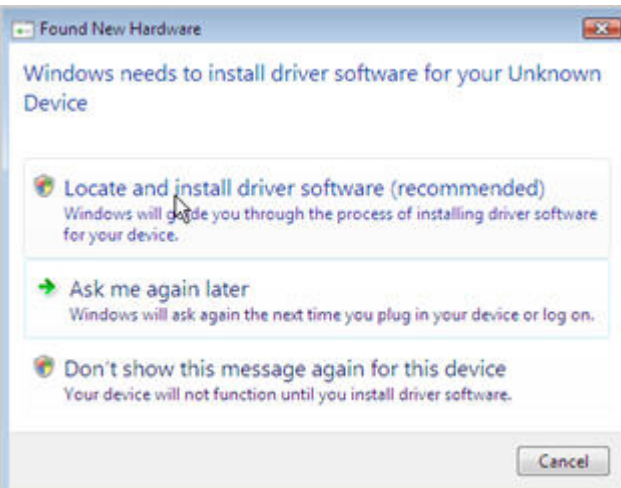

17. On the **Start Installation** screen, click **Next**.



Web Control Driver's License Scanner Installation

<p>18. When the installation completes, click Finish.</p> <p>19. Click Close.</p>	
<p>20. Connect your scanner to the computer.</p> <p>The computer will detect the scanner as new hardware, and prompt you to install it.</p>	
<p>21. On the Found New Hardware Wizard screen, click the No, not at this time option.</p> <p>22. Click Next.</p>	

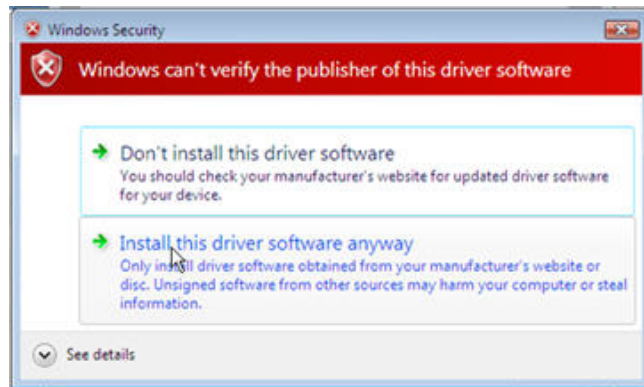
Web Control Driver's License Scanner Installation

<p>23. Select the Install the software automatically (Recommended) option. If you are using Windows Vista with Internet Explorer 8, please see step 25.</p> <p>24. Click Next.</p>	 The 'Found New Hardware Wizard' window is shown. It has a blue title bar and a blue background with a circuit-like pattern. The text reads: 'Welcome to the Found New Hardware Wizard', 'This wizard helps you install software for: CSSN USB2 Camera Device Driver', 'If your hardware came with an installation CD or floppy disk, insert it now.', 'What do you want the wizard to do?', 'Install the software automatically (Recommended)' (selected with a radio button), 'Install from a list or specific location (Advanced)' (unselected with a radio button), 'Click Next to continue:'. At the bottom are buttons for '< Back', 'Next >' (highlighted with a mouse cursor), and 'Cancel'.
<p>25. If you are using Windows Vista with Internet Explorer 8, click the Locate and install driver software (recommended) option. Otherwise, go to the next step.</p>	 The 'Found New Hardware' window is shown. It has a blue title bar and a light blue background. The text reads: 'Windows needs to install driver software for your Unknown Device', 'Locate and install driver software (recommended)' (selected with a radio button), 'Windows will guide you through the process of installing driver software for your device.', 'Ask me again later' (unselected with a radio button), 'Windows will ask again the next time you plug in your device or log on.', 'Don't show this message again for this device' (unselected with a radio button), 'Your device will not function until you install driver software.', and a 'Cancel' button at the bottom right.
<p>26. When your system has located the software, click Continue Anyway. If you are using Windows Vista with Internet Explorer 8, please see step 27.</p>	 The 'Hardware Installation' window is shown. It has a blue title bar and a yellow background with a warning icon. The text reads: 'The software you are installing for this hardware: CSSN USB2 Camera Device Driver', 'has not passed Windows Logo testing to verify its compatibility with Windows XP. (Tell me why this testing is important.)', 'Continuing your installation of this software may impair or destabilize the correct operation of your system either immediately or in the future. Microsoft strongly recommends that you stop this installation now and contact the hardware vendor for software that has passed Windows Logo testing.' At the bottom are buttons for 'Continue Anyway' (highlighted with a mouse cursor) and 'STOP Installation'.

Web Control Driver's License Scanner Installation

27. If you are using **Windows Vista with Internet Explorer 8**, click the **Install this driver software anyway** option.

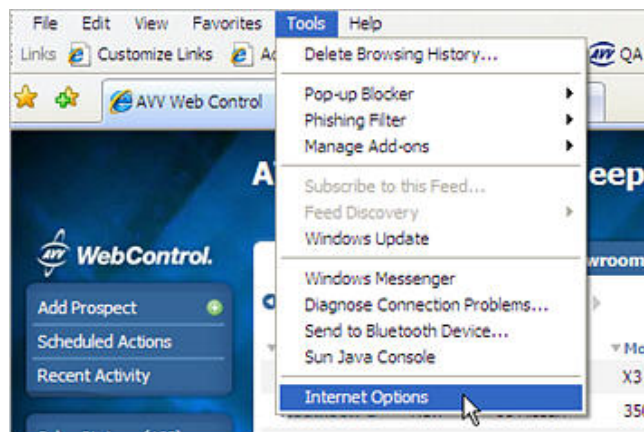
Otherwise, go to the next step.



28. When the installation completes, click **Finish**.
29. Log off Web Control if you haven't already, and close any open Internet browser windows.
30. Log back in to Web Control to use your scanner, or continue with the following steps if you are using **Microsoft XP or Vista** operating systems and **Internet Explorer**.



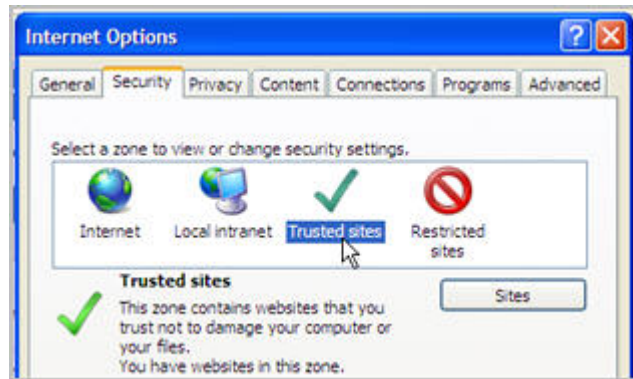
31. If you are using **Microsoft XP or Vista** operating systems and **Internet Explorer**, open **Internet Explorer** if you do not already have it open.
32. Go to the **Tools** menu, and click **Internet Options**.



Web Control Driver's License Scanner Installation

33. Click the **Security** tab, and click **Trusted Sites** to select the **Trusted Sites** zone.

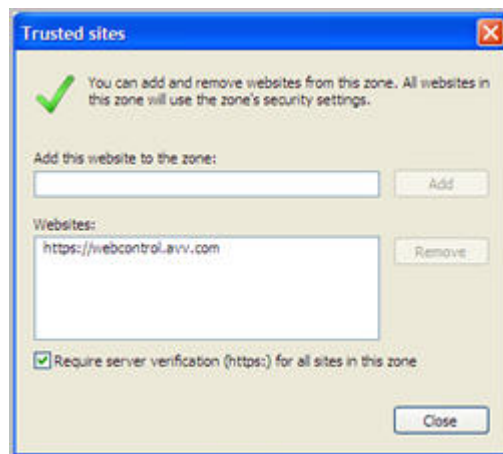
34. Click the **Sites** button.



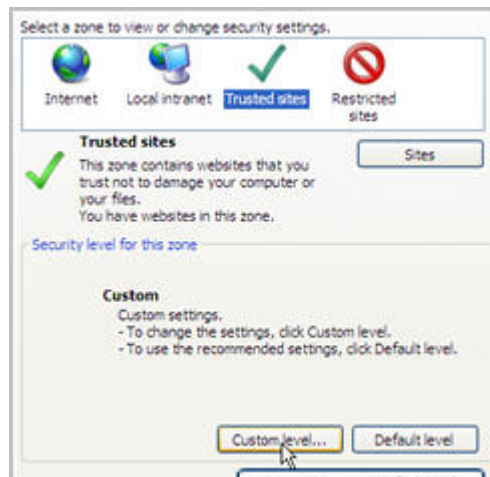
35. Verify that the web address for Web Control is a trusted site. If it is not, add it as a trusted site.

- <https://webcontrol.avv.com>

36. Click **Close**.



37. With **Trusted Sites** still selected as the zone, click **Custom Level**.



Web Control Driver's License Scanner Installation

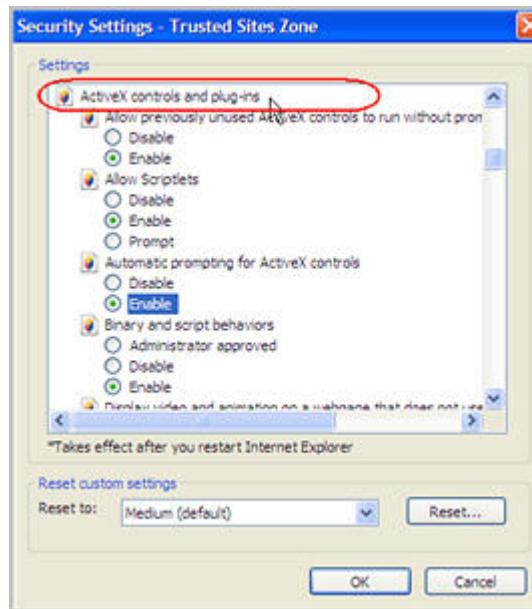
38. In the **Active X controls and plug-in** section, select **Enable** for all the options.

Note: These settings **only** apply to web sites in your **Trusted Sites** list.

39. Click **OK** to close the **Security Settings** window.

40. Click **OK** to close the **Internet Options** window.

Setup is now complete and you can begin using your scanner.



If you have any additional questions regarding scanner installation, please contact Customer Support at (614)839-7888 or webcontrolsupport@avv.com.